



Solutions for IHC

Immunohistochemistry Products
2018 Catalog

Immunohistochemistry Products

In an industry where seemingly small decisions can have huge implications and the quality of your diagnosis is critical, it is good to know that Thermo Fisher Scientific™ has a range of fast, accurate and cost-effective solutions which are trusted throughout the Immunohistochemistry (IHC) field.

Formerly known as Labvision, and now integrated into the Thermo Scientific portfolio, our IHC range of solutions combines the knowledge and experience of Labvision with the backing and support of the world leader in serving science.

IHC Antibodies

Thermo Scientific™ antibodies are designed for multiple applications such as clinical or research IHC and applications other than IHC such as Western Blotting or immunoprecipitation. For the latest product offerings and updates, visit www.thermofisher.com or contact your local representative.

Concentrates are available in 1ml (-S, -A, or -P), 0.5ml and 0.1ml sizes and ready to use in 7ml (-R7, for use with LP detection system) or 12ml (-RQ, for use with Quanto detection system), and are considered In Vitro Diagnostic (IVD) devices, Research Use Only (RUO) devices, or Analyte Specific Reagent (ASR, US-only). Please check the website for azide-free formats.

Part Number Key

HM Hamster Monoclonal	MS Mouse Monoclonal	MV MultiVision	NC Negative Control	RB Rabbit Polyclonal	RM Rabbit Monoclonal	SH Sheep Polyclonal
------------------------------	----------------------------	-----------------------	----------------------------	-----------------------------	-----------------------------	----------------------------

IHC Antibodies		
Item	REF Num	
Mucin 1 (MUC-1)	HM-1630	RUO
14.3.3 sigma [1433S01]	MS-1185	RUO
Actin, Muscle Specific [HHF35]	MS-742	IVD
Actin, Muscle Specific [MSA06]	MS-1296	RUO
Actin, pan [ACTN05]	MS-1295	RUO
Actin, Skeletal Muscle [5C5.F8.C7]	MS-185	RUO
Actin, Smooth Muscle [1A4]	MS-113	IVD
Adenovirus [M58 + M73]	MS-1069	RUO
Adrenocorticotrophic Hormone (ACTH)	MS-452	IVD
ALK (Anaplastic Lymphoma Kinase) / p80 [5A4]	MS-1104	IVD
Amyloid A Component	MS-1219	RUO
Amyloid A4 / Amyloid Beta	MS-1167	RUO
Androgen Receptor [AR441]	MS-443	RUO
Anti-Cytomegalovirus 7 [CCH2+DD]	MS-1948	RUO
Bax	MS-711	RUO
BCL-2alpha [100/D5]	MS-123	IVD
BCL-2alpha [8C8]	MS-597	RUO
BCL-6 [BCL6.2]	MS-1114	RUO
BCL-6 [LN22]	MS-1936	IVD

IHC Antibodies		
Item	REF Num	
Biotin	MS-1048	RUO
c-erbB-2 / HER-2 / neu	MS-229	RUO
c-erbB-2 / HER-2 / neu	MS-302	RUO
c-erbB-2 / HER-2 / neu	MS-600	RUO
c-erbB-2 / HER-2 / neu	MS-301	RUO
c-erbB-2 / HER-2 / neu (Phospho-specific)	MS-1072	RUO
c-erbB-2 / HER-2 / neu [3B5]	MS-599	RUO
c-erbB-2 / HER-2 / neu [e2-4001 + 3B5]	MS-730	IVD/ ASR
c-erbB-2 / HER-2 / neu [e2-4001]	MS-325	RUO
c-erbB-3 / HER-3 [2B5]	MS-310	RUO
c-erbB-3 / HER-3 [2F12]	MS-201	RUO
c-erbB-3 / HER-3 [H3.90.6]	MS-262	RUO
c-myc	MS-139	RUO
CA 125 (Ovarian Cancer Antigen)	MS-1151	IVD
CA19-9 / Sialyl Lewis a (GI Tumor Marker) [116-NS-19-9]	MS-1811	RUO
CA19-9 / Sialyl Lewis a (GI Tumor Marker) [121SLE]	MS-379	IVD
Cadherin E / E-Cadherin	MS-1862	RUO
Caldesmon, HMW	MS-1169	IVD
Calponin	MS-1168	IVD

Part Number Key

HM Hamster Monoclonal	MS Mouse Monoclonal	MV MultiVision	NC Negative Control	RB Rabbit Polyclonal	RM Rabbit Monoclonal	SH Sheep Polyclonal
------------------------------	----------------------------	-----------------------	----------------------------	-----------------------------	-----------------------------	----------------------------

IHC Antibodies		
Item	REF Num	
Carcinoembryonic Antigen (CEA) / CD66e [COL-1]	MS-613	RUO
Caspase 6 (Mch 2)	MS-1126	RUO
Caspase 8 (FLICE)	MS-1143	RUO
CD10/CALLA (Neutral Endopeptidase)	MS-728	IVD
CD117 / c-Kit / SCF-Receptor	MS-289	RUO
CD137 (4-1BB) [BBK-2]	MS-621	RUO
CD138	MS-1793	IVD
CD141 / Thrombomodulin	MS-1102	RUO
CD15	MS-1259	IVD
CD155 / PVR (Poliovirus Receptor)	MS-465	RUO
CD163	MS-1103	RUO
CD1a [MTB1]	MS-746	RUO
CD1a [O10]	MS-1856	IVD
CD2 [LFA-2]	MS-1074	IVD
CD20 [L26]	MS-340	IVD
CD21 [2G9]	MS-1086	IVD
CD23	MS-729	IVD
CD24 (GPI-linked surface mucin)	MS-1278	RUO
CD24 (GPI-linked surface mucin) [SN3b]	MS-1279	RUO
CD25 / IL-2Ralpha	MS-203	RUO
CD29 (Integrin Beta-1)	MS-596	RUO
CD30 (Reed-Sternberg Cell Marker)	MS-361	IVD
CD30 (Reed-Sternberg Cell Marker)	MS-1857	IVD
CD31 / PECAM-1 (Endothelial Cell Marker)	MS-353	IVD
CD34 [QBEnd/10] I	MS-363	IVD
CD35 / CR1 (Follicular Dendritic Cell Marker)	MS-336	RUO
CD36 / GPIIb / GPIV /	MS-756	RUO
CD38	MS-983	RUO
CD3epsilon (Early T-Cell Marker)	MS-1880	RUO
CD4	MS-1528	IVD
CD42b (GPIb)	MS-1174	RUO
CD43 / T-Cell Marker	MS-146	IVD
CD44 Std. / HCAM	MS-668	IVD
CD45 / T200 / LCA	MS-355	IVD
CD45RO (T-Cell Marker)	MS-112	IVD
CD47	MS-1302	RUO
CD5	MS-393	IVD
CD56 / NCAM-1	MS-1149	IVD
CD57 (Natural Killer Cell Marker)	MS-136	IVD

IHC Antibodies		
Item	REF Num	
CD68 / Macrophage Marker	MS-397	IVD
CD68 / Macrophage Marker	MS-1808	IVD
CD71 / Transferrin Receptor	MS-1096	RUO
CD79a / mb-1 (B Cell Marker) [HM47/A9]	MS-357	RUO
CD79a / mb-1 (B Cell Marker) [JBC117]	MS-1171	IVD
CD8	MS-457	IVD
CD99 / MIC2 (Ewing's Sarcoma Marker)	MS-294	IVD
CD99 / MIC2 (Ewing's Sarcoma Marker)	MS-1633	RUO
CDC25C	MS-751	RUO
Cdh1	MS-1116	RUO
Cdk4	MS-299	RUO
Cdk5	MS-906	RUO
CDw75	MS-130	IVD
Chk2	MS-1330	RUO
Chromogranin A [LK2H10]	MS-324	IVD
Chromogranin A [PHE5]	MS-381	RUO
Chromogranin A [LK2H10 + PHE5]	MS-382	RUO
Collagen II [2B1.5]	MS-235	RUO
Collagen II [5B2.5]	MS-234	RUO
Collagen II [6B3]	MS-306	RUO
Collagen VII	MS-444	RUO
Cyclin D2	MS-213	RUO
Cyclin D3	MS-215	RUO
Cystic Fibrosis Transmembrane Regulator (CFTR) [L12B4]	MS-1248	RUO
Cystic Fibrosis Transmembrane Regulator (CFTR) [M3A7]	MS-1249	RUO
D2-40 [D2-40]	MS-1940	IVD
Desmin (Muscle Cell Marker)	MS-376	IVD
DNA-PKcs	MS-369	RUO
DNA-PKcs (Cocktail)	MS-423	RUO
DOG-1	MS-1933	IVD
DP-1 Transcription Factor	MS-1056	RUO
Epidermal Growth Factor Receptor / EGFR	MS-378	RUO
Epidermal Growth Factor Receptor / EGFR	MS-609	RUO
Epidermal Growth Factor Receptor / EGFR	MS-269	RUO
Epidermal Growth Factor Receptor / EGFR	MS-316	RUO
Epidermal Growth Factor Receptor / EGFR	MS-396	RUO
Epidermal Growth Factor Receptor / EGFR	MS-665	RUO
Epithelial Membrane Antigen /EMA	MS-348	IVD
Epithelial Membrane Antigen /EMA	MS-741	IVD

Part Number Key

HM Hamster Monoclonal	MS Mouse Monoclonal	MV MultiVision	NC Negative Control	RB Rabbit Polyclonal	RM Rabbit Monoclonal	SH Sheep Polyclonal
------------------------------	----------------------------	-----------------------	----------------------------	-----------------------------	-----------------------------	----------------------------

IHC Antibodies		
Item	REF Num	
Epithelial Specific Antigen (EMAb-7) [MOC-31] Mouse	MS-1825	RUO
Epithelial Specific Antigen (Ep-CAM)	MS-144	IVD
Epithelial Specific Antigen (Ep-CAM)	MS-1898	IVD
Epstein-Barr Virus / LMP	MS-1458	IVD/ ASR
ERG [9FY]	MS-1937	IVD
Estrogen Receptor	MS-315	RUO
Estrogen Receptor	MS-391	RUO
Estrogen Receptor [1D5]	MS-354	IVD/ ASR
Estrogen Receptor [1D5+6F11]	MS-750	IVD/ ASR
Factor VIII Related Antigen / von Willebrand Factor	MS-722	IVD
Factor XIII A	MS-1237	IVD
Fascin	MS-1112	IVD
Filaggrin	MS-449	RUO
Follicle Stimulating Hormone (FSH)	MS-1449	IVD
GCDFP-15 (Gross Cystic Disease Fluid Protein-15) Fluid Protein-15)	MS-1170	IVD
GFAP / Glial Fibrillary Acidic Protein	MS-1376	IVD
GLUT-1 [SPM498]	MS-10637	IVD
Glycophorin A	MS-1843	IVD
Glypican-3	MS-1939	RUO
Granzyme B	MS-1157	IVD
Growth Hormone, Human / hGH	MS-1328	RUO
H1 [4C9C7]	MS-1941	IVD
Heat Shock Protein 70 (HSP70)	MS-482	RUO
Hepatitis B Virus Surface Antigen (HBVsAg)	MS-314	RUO/ ASR
Hepatocyte	MS-1810	IVD
Hepatocyte Growth Factor	MS-651	RUO
Hepatocyte Growth Factor	MS-775	RUO
Human Chorionic Gonadotropin (HCG)	MS-1065	RUO
Human Papilloma Virus (HPV)[K1H8]	MS-1826	IVD/ ASR
Human Sodium Iodide Symporter(hNIS)	MS-1653	RUO
IGF-1R (alpha-Subunit)	MS-641	RUO
IGF-1R (alpha-Subunit)	MS-644	RUO
Insulin Receptor (Alpha-Subunit)	MS-631	RUO
Insulin Receptor (Alpha-Subunit)	MS-632	RUO

IHC Antibodies		
Item	REF Num	
Insulin Receptor (Beta-Subunit)	MS-635	RUO
Insulin Receptor (Beta-Subunit)	MS-636	RUO
Interferon-a (II) / IFN-a (II)	MS-574	RUO
Involucrin	MS-126	RUO
Kappa Light Chain	MS-143	IVD
Keratin 10	MS-611	IVD
Keratin 14	MS-115	RUO
Keratin 15	MS-1068	RUO
Keratin 17	MS-489	IVD
Keratin 18	MS-142	IVD
Keratin 19	MS-198	IVD
Keratin 19	MS-1902	RUO
Keratin 19	MS-1671	RUO
Keratin 20	MS-377	IVD
Keratin 5	MS-1896	IVD
Keratin 5 / 6	MS-1814	IVD
Keratin 7	MS-1352	IVD
Keratin 8	MS-997	IVD
Keratin 8 / 18	MS-743	IVD
Keratin 8 / 18	MS-1603	IVD
Keratin, HMW	MS-1447	IVD
Keratin, Low Molecular Weight	MS-341	IVD
Keratin, Pan	MS-356	RUO
Keratin, Pan	MS-343	IVD
Ku (p70)	MS-329	RUO
L1 Cell Adhesion Molecule	MS-770	RUO
Lambda Light Chain	MS-180	IVD
Laminin Receptor	MS-259	RUO
LCK p56 lck LCK p56 lck	MS-164	RUO
LRP / MVP (Major Vault Protein)	MS-664	RUO
Luteinizing Hormone, Human (LH)	MS-1448	IVD
Macrophage / L1 Protein / Calprotectin	MS-148	IVD
Mammaglobin [304-1A5]	MS-1919	RUO
MAP 2a,b (Microtubule-Associated Protein)	MS-249	RUO
MAP 2a,b,c (Microtubule-Associated Protein)	MS-250	IVD
MART-1 / Melan-A	MS-612	RUO
MART-1 / Melan-A	MS-799	IVD
MART-1 / Melan-A (Cocktail)	MS-716	RUO
Mast Cell Tryptase	MS-1216	RUO
Melanoma (gp100)	MS-364	IVD

IHC Antibodies

Item	REF Num	
Melanoma Marker, Pan	MS-939	RUO
Mesothelin	MS-1320	IVD
Mesothelioma	MS-1494	IVD
MGMT (O-methylguanine-DNA methyltransferase)	MS-470	RUO
MHC II (HLA-DR)	MS-133	RUO
Microglobulin Beta-2	MS-440	RUO
Microphthalmia (TranscriptionFactor) (MITF)	MS-772	RUO
Mitochondria	MS-1372	RUO
MMP-10 (Stromelysin-2)	MS-822	RUO
MMP-11 (Stromelysin-3)	MS-1035	RUO
MMP-2 (72kDa Collagenase IV)	MS-567	RUO
MMP-2 (72kDa Collagenase IV)	MS-804	RUO
MMP-2 (72kDa Collagenase IV)	MS-806	RUO
MMP-3 (Stromelysin-1)	MS-809	RUO
MMP-9 (92kDa Collagenase IV)	MS-816	RUO
MSH2 (Mismatch Repair Protein 2)	MS-1498	IVD
Mucin 2 (MUC-2)	MS-1037	IVD
Mucin 3 (MUC-3)	MS-1734	RUO
Mucin 5AC (MUC-5AC) / Gastric Mucin	MS-145	IVD
MyoD1	MS-278	RUO
Myogenin	MS-1113	RUO
Myosin, Skeletal Muscle	MS-1236	RUO
Neurofilament (200kDa & 68kDa)	MS-359	IVD
Neurotrophin Receptor / NGF-Receptor (p75 NGFR)	MS-394	RUO
NY-BR-1	MS-1932	IVD
OCT3/4 (POU5F1) [653108]	MS-1947	IVD
p130 Cas	MS-855	RUO
p170 / p-Glycoprotein / MDR	MS-660	RUO
p18 INK4c	MS-858	RUO
p21 WAF1	MS-230	IVD
p21 WAF1	MS-454	RUO
p21 WAF1	MS-891	RUO
p300 / CBP (CREB-Binding Protein)	MS-586	RUO
p53	MS-186	IVD
p53	MS-187	RUO
p53	MS-738	IVD
p57 Kip2	MS-1062	IVD
PCNA (Proliferating Cell Nuclear Antigen)	MS-106	RUO
Pds1	MS-1511	RUO
Perforin	MS-1834	IVD

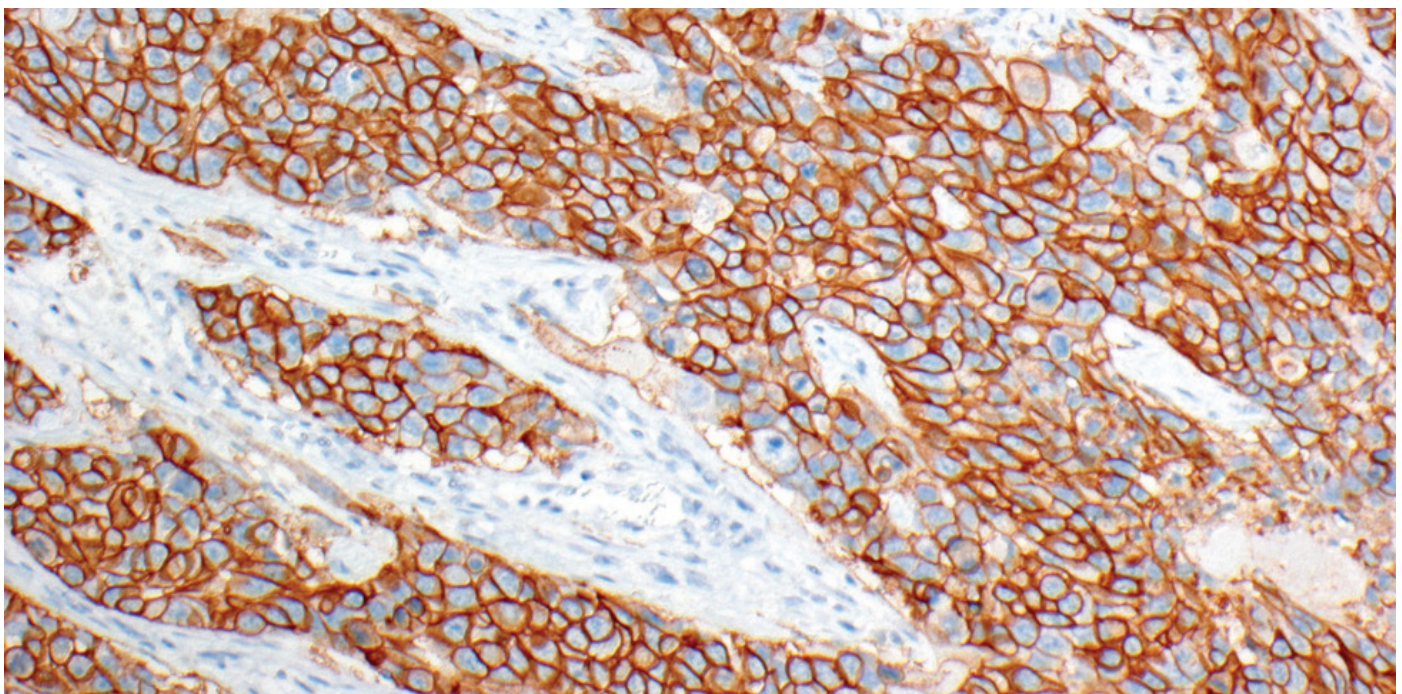


Part Number Key

HM Hamster Monoclonal	MS Mouse Monoclonal	MV MultiVision	NC Negative Control	RB Rabbit Polyclonal	RM Rabbit Monoclonal	SH Sheep Polyclonal
------------------------------	----------------------------	-----------------------	----------------------------	-----------------------------	-----------------------------	----------------------------

IHC Antibodies		
Item	REF Num	
Placental Alk. Phosphatase (PLAP)	MS-208	RUO
Placental Alk. Phosphatase(PLAP)	MS-734	IVD
Progesterone Receptor	MS-196	RUO
Progesterone Receptor	MS-1882	RUO
Progesterone Receptor[hPRa 2+hPR 3]	MS-298	IVD/ ASR
Prohibitin (Mitochondrial Marker)	MS-261	RUO
Prolactin	MS-1362	RUO
Prostate Specific Acid Phosphatase (PSAP)	MS-321	IVD
PTEN / MMAC1	MS-1601	RUO
Renal Cell Carcinoma Marker (gp200)	MS-409	IVD
Retinoblastoma (Rb)	MS-107	RUO
Rhodopsin (Opsin)	MS-1233	RUO
S100 Protein	MS-296	IVD
Serotonin	MS-1431	IVD
SF-1 (NR5A1,AD4BP) [N1665]	MS-1946	RUO
Smith Antigen (sm)	MS-450	RUO
SREBP-1 (Sterol Regulatory Element Binding Protein-1)	MS-1207	RUO
Surfactant Protein B (Precursor)	MS-704	RUO
SV40 Large T Antigen	MS-1832	RUO
Synuclein	MS-1572	RUO
TAG-72 / CA 72-4 [B72.3]	MS-138	IVD

IHC Antibodies		
Item	REF Num	
Tartrate Resistant Acid Phosphatase (TRAP)Ab-1	MS-1768	IVD
TAU	MS-247	RUO
TdT / Terminal Deoxyribonucleotidyl Transferase	MS-1105	IVD
Thrombospondin (TSP)	MS-418	RUO
Thrombospondin (TSP)	MS-421	RUO
Thymidine Phosphorylase / PD-ECGF	MS-499	RUO
Thyroid Transcription Factor-1 (TTF-1)	MS-699	IVD
TIMP-1	MS-608	RUO
TIMP-2	MS-1485	RUO
Topoisomerase II alpha	MS-1819	IVD
Transforming Growth Factor alpha (TGF alpha)	MS-670	RUO
Transglutaminase II	MS-224	RUO
Troponin T, Cardiac Isoform	MS-295	IVD
Tubulin-Alpha	MS-581	RUO
Tyrosinase	MS-800	IVD
Vascular Endothelial Growth Factor (VEGF)	MS-1467	RUO
Vascular Endothelial Growth Factor (VEGF)	MS-350	RUO
Villin	MS-1499	IVD
Vimentin	MS-129	IVD
Vinculin	MS-1209	RUO
XRCC1 (X-Ray Repair Cross Complementing Protein1)	MS-434	RUO
ZAP-70 [2F3.2]	MS-1911	IVD



Part Number Key

HM Hamster Monoclonal	MS Mouse Monoclonal	MV MultiVision	NC Negative Control	RB Rabbit Polyclonal	RM Rabbit Monoclonal	SH Sheep Polyclonal
------------------------------	----------------------------	-----------------------	----------------------------	-----------------------------	-----------------------------	----------------------------

IHC Antibodies		
Item	REF Num	
MultiVision CD3 epsilon [F7.2.38] + Ki-67 [SP6]	MV-2005	IVD
Vimentin-gp100	MV-2004	IVD
Negative Control for Mouse	NC-748	RUO
Negative Control for Mouse	NC-1391	RUO
Negative Control for Rabbit	NC-100	RUO
Actin, Smooth Muscle	RB-9010	IVD
Alpha Fetoprotein (AFP)	RB-9064	IVD
Alpha-1-Antitrypsin	RB-367	RUO
Amyloid Precursor Protein (APP)	RB-9023	IVD
Androgen Receptor	RB-9030	IVD
Anti-Phosphorylated Histone H3(pHH3)	RB-9425	RUO
c-erbB-2 / HER-2 / neu	RB-103	RUO
C1q Complement, Polyclonal FITC Labeled	RB-1926	RUO
C4 Complement, Polyclonal FITC Labeled	RB-1927	RUO
Cadherin, Pan	RB-9036	RUO
Calretinin	RB-9002	IVD
Carcinoembryonic Antigen (CEA) / CD66e	RB-368	IVD
Catenin, beta	RB-9035	IVD
CD105 / Endoglin / TGF beta 1/3 Receptor	RB-9291	IVD
CD117 / c-Kit / SCF-Receptor	RB-9038	IVD
CD138	RB-9422	RUO
CD20	RB-9013	IVD
CD31 / PECAM-1 (Endothelial Cell Marker)	RB-10333	RUO
CD3epsilon (Early T-Cell Marker)	RB-360	IVD
Chromogranin A	RB-9003	RUO
Claudin 1	RB-9209	IVD
Desmin (Muscle Cell Marker)	RB-9014	IVD
Dystrophin	RB-9024	IVD
Estrogen Receptor	RB-1493	RUO
Estrogen Receptor	RB-1521	RUO
Factor VIII Related Antigen / von Willebrand Factor	RB-281	IVD
Factor XIII A	RB-1464	RUO
Fibrinogen, Polyclonal FITC Labeled	RB-1924	RUO
Fit-1 / VEGFR1	RB-1527	RUO
Gastrin	RB-1459	IVD
GFAP / Glial Fibrillary Acidic Protein	RB-087	RUO
GLUT-1	RB-9052	IVD
Heat Shock Protein 90alpha / hsp90alpha (HSP86)	RB-119	RUO

IHC Antibodies		
Item	REF Num	
Helicobacter pylori	RB-9070	IVD/ ASR
IgA (alpha-Heavy Chain)	RB-1433	IVD
IgD (delta-Heavy Chain)	RB-1436	IVD
IgE (epsilon-Heavy Chain)	RB-1435	IVD
IgG (gamma-Heavy Chain)	RB-1432	IVD
IgM (mu-Heavy Chain)	RB-1434	IVD
Immunoglobulin M (IgM), Polyclonal FITC Labeled	RB-1922	IVD
Kappa Light Chain	RB-333	IVD
Kappa, Polyclonal FITC Labeled	RB-1929	RUO
Keratin 14	RB-9020	IVD
Ki-67	RB-1510	RUO
Ki-67	RB-9043	RUO
Lambda Light Chain	RB-334	IVD
Lambda, Polyclonal FITC Labeled	RB-1930	RUO
Laminin	RB-082	IVD
Lysozyme / Muramidase	RB-372	IVD
Mucin 1 (MUC-1)	RB-9222	IVD
Myelin Basic Protein	RB-1460	IVD
Myeloperoxidase (MPO)	RB-373	IVD
Myoglobin	RB-9068	RUO
Nitric Oxide Synthase, endothelial (eNOS)	RB-9279	RUO
Osteopontin	RB-9097	RUO
Pax-5	RB-9406	IVD
PDGFR, alpha	RB-1691	RUO
PDGFR, alpha	RB-9027	RUO
Placental Lactogen (hPL)	RB-9067	IVD
Protein Gene Product 9.5	RB-9202	IVD
ROC1	RB-069	RUO
S100	RB-9018	IVD
S100 Protein	RB-044	RUO
Survivin	RB-9245	RUO
Synaptophysin	RB-1461	RUO
Synuclein alpha	RB-9026	IVD
Ubiquitin	RB-9203	RUO
Vascular Endothelial Growth Factor (VEGF)	RB-9031	IVD/ ASR
Wilm's Tumor Protein (WT1)	RB-9267	RUO
ALK (Anaplastic Lymphoma Kinase) / p80 [SP8]	RM-9108	IVD

Part Number Key

HM Hamster Monoclonal	MS Mouse Monoclonal	MV MultiVision	NC Negative Control	RB Rabbit Polyclonal	RM Rabbit Monoclonal	SH Sheep Polyclonal
------------------------------	----------------------------	-----------------------	----------------------------	-----------------------------	-----------------------------	----------------------------

IHC Antibodies		
Item	REF Num	
Anti-Factor XIII A [EP3372]	RM-2123	IVD
Anti-Glial Fibrillary Acidic Protein (GFAP) [EP13]	RM-2125	IVD
Beta-catenin	RM-2101	IVD
BOB1 [SP92]	RM-9124	IVD
c-erbB-2 / HER-2 / neu [SP3]	RM-9103	IVD/ ASR
c-erbB2 / HER-2 / neu [EP1045Y]	RM-2112	IVD/ ASR
Calcitonin	RM-9117	IVD
Calponin-1	RM-2102	IVD
Calretinin [SP13]	RM-9113	IVD
CD20 [EP459Y]	RM-2115	IVD
CD23 [SP23]	RM-9123	IVD
CD3 (Early T Cell Marker)	RM-9107	IVD
CD3epsilon	RM-2109	IVD
CD5 [EP2952]	RM-2118	IVD
CD5 [SP19]	RM-9119	IVD
CD7 [EPR4242]	RM-2122	IVD
CD79a / mb-1 (B-Cell Marker) [SP18]	RM-9118	IVD
CD8 [SP16]	RM-9116	IVD
CDX2 [EPR2764Y]	RM-2116	IVD
Chromogranin A [SP12]	RM-9112	IVD
COX2	RM-9121	IVD
Cyclin D1 / Bcl-1 [SP4]	RM-9104	IVD
Cyclin D1 [EPR2241IHC]	RM-2113	IVD
DOG-1 [SP31]	RM-9132	IVD
E-Cadherin	RM-2100	IVD
Epidermal Growth Factor Receptor (EGFR) [EP38Y]	RM-2111	IVD
Estrogen Receptor [SP1]	RM-9101	IVD
Keratin 18	RM-2108	IVD
Keratin 5	RM-2106	IVD
Keratin 8	RM-2107	IVD
Ki-67 [SP6]	RM-9106	IVD
MSH6 [EPR3945]	RM-2119	IVD
Napsin-A [EPR6252]	RM-2121	IVD
p120 Catenin [EP66]	RM-2126	IVD

IHC Antibodies		
Item	REF Num	
p504S/ AMACR [13H4]	RM-9130	RUO/ ASR
p53	RM-2103	IVD
p53 [SP5]	RM-9105	IVD
Pax-5	RM-9133	IVD
Placental Alk. Phosphatase (PLAP)	RM-9115	IVD
PMS2 [EPR3947]	RM-2120	
Progesterone Receptor [SP2]	RM-9102	IVD
Progesterone Receptor [YR85]	RM-2114	IVD/ ASR
Prostate Specific Membrane Antigen (PSMA) [SP29]	RM-9131	IVD
PSA [EP1588Y]	RM-2104	RUO/ ASR
Smooth Muscle Myosin HeavyChain 7 [EPR5336(B)]	RM-2124	IVD
Synaptophysin (Neuroendocrine Marker)	RM-9111	IVD
Vimentin	RM-9120	IVD
Laminin B2 / gamma1	RT-795	RUO
Vitamin D Receptor (VDR)	RT-200	RUO
C3c Complement, Polyclonal FITC Labeled C Labeled	SH-1923	
Immunoglobulin A (IgG), Polyclonal FITC Labeled	SH-1920	
Immunoglobulin G (IgG), Polyclonal FITC Labeled	SH-1921	

Part Number Key

HM Hamster Monoclonal	MS Mouse Monoclonal	MV MultiVision	NC Negative Control	RB Rabbit Polyclonal	RM Rabbit Monoclonal	SH Sheep Polyclonal
------------------------------	----------------------------	-----------------------	----------------------------	-----------------------------	-----------------------------	----------------------------

IHC Detection Systems

To complement our robust antibody portfolio, we offer an array of detection technologies designed to meet the needs of the clinical and research market.

IHC Detection Systems		
Item	REF Num	
DAB Quanto 1 L	TA-999-QHDX	IVD
Kit PV HRP polymer 1LTL-999-PB/PH and TA-999-PBQ	TL-999-HL	IVD
MV Polymer/ anti-mouse/ AP+anti Rabbit/HRP 12 mL	TL-012-MARH	IVD
MV Polymer/ anti-mouse/ HRP+anti Rabbit/AP 12 mL	TL-012-MHRA	IVD

IHC Detection Systems		
Item	REF Num	
UltraVision LP AP Polymer & Fast Red Chromogen 15 mL	TL-015-AF	IVD
UltraVision LP HRP Polymer & AEC Chromogen 15 mL	TL-015-HA	IVD
UltraVision LP HRP Polymer & DAB Chromogen 15 mL	TL-015-HD	IVD
UltraVision LP HRP Polymer & DAB Chromogen 60 mL	TL-060-HD	IVD
UltraVision LP HRP Polymer & DAB Chromogen 125 mL	TL-125-HD	IVD
UltraVision LP Large Vol AP Polymer (RTU) 60 mL	TL-060-AL	IVD



IHC Detection Systems		
Item	REF Num	
UltraVision LP Large Vol AP Polymer (RTU) 125 mL	TL-125-AL	IVD
UltraVision LP Large Vol HRP Polymer (RTU) 60 mL	TL-060-HL	IVD
UltraVision LP Large Vol HRP Polymer (RTU) 125 mL	TL-125-HL	IVD
UltraVision ONE Large Vol, AP Polymer (RTU) 60 mL	TL-060-ALJ	IVD
UltraVision ONE Large Vol, HRP Polymer (RTU) 60 mL	TL-060-HLJ	IVD
UltraVision ONE Large Vol, HRP Polymer (RTU) 125 mL	TL-125-HLJ	IVD
UltraVision ONE Large Vol. AP Polymer (RTU) 125 mL	TL-125-ALJ	IVD
UltraVision ONE, AP Polymer & Fast Red Chromogen 15 mL	TL-015-AFJ	IVD
UltraVision ONE, HRP Polymer & AEC Chromogen 15 mL	TL-015-HAJ	IVD
UltraVision ONE, HRP Polymer & DAB Chromogen 15 mL	TL-015-HDJ	IVD
UltraVision Quanto Detection System AP 60 mL	TL-060-QAL	IVD
UltraVision Quanto Detection System HRP DAB 60 mL	TL-060-QHD	IVD
UltraVision Quanto AP 1 L	TL-999-QAL	IVD
UltraVision Quanto Complete Kit 125 mL	TL-125-QCK	IVD
UltraVision Quanto Complete Kit 60 mL	TL-060-QCK	IVD
UltraVision Quanto Detection System AP 125 mL	TL-125-QAL	IVD
UltraVision Quanto Detection System HRP 125 mL	TL-125-QHL	IVD
UltraVision Quanto Detection System HRP 60 mL	TL-060-QHL	IVD
UltraVision Quanto Detection System HRP DAB 125 mL	TL-125-QHD	IVD
UltraVision Quanto Detection System HRP DAB Sample 15 mL	TL-015-QHD	IVD

IHC Detection Systems		
Item	REF Num	
UltraVision Quanto HRP 1TL-999-QPB/QPH and TA-999-PBQ	TL-999-QHL	IVD
UltraVision Quanto HRP DAB 1 L	TL-999-QHD	IVD
UltraVision Quanto Mouse on Mouse HRP 15 mL	TL-015-QHDM	RUO
UltraVision Quanto Mouse on Mouse HRP 60 mL	TL-060-QHDM	RUO
UltraVision Quanto Mouse on Mouse HRP 125 mL	TL-125-QHDM	RUO

IHC Ancillary Products

IHC Ancillaries		
Item	REF Num	
Antibody Diluent OP Quanto	TA-125-ADQ	IVD
Citrate Buffer for HIER 125 mL	AP-9003-125	IVD
Citrate Buffer for HIER 500 mL	AP-9003-500	IVD
Dewax and HIER Buffer (H,M,L) Variety Pack (15x concentrate)	TA-999-DHBVP	IVD
Dewax and HIER Buffer H (15x concentrate) 10x100 mL	TA-999-DHBH	IVD
Dewax and HIER Buffer L (15x concentrate) 10x100 mL	TA-999-DHBL	IVD
Dewax and HIER Buffer M (15x concentrate) 10x100 mL	TA-999-DHBM	IVD
EDTA Buffer for HIER (10X) 125 mL	AP-9004-125	IVD
EDTA Buffer for HIER (10X) 500 mL	AP-9004-500	IVD
FITC Protein Blocking Agent (PBA) 6 mL	TA-006-PBA	IVD
HIER Buffer H, 9 BT/CS Tris-EDTA Buffer, 15 ml/BT	TA-135-HBH	IVD
HIER Buffer L, 9 BT/CS Citrate Buffer, 15 ml/BT	TA-135-HBL	IVD
HIER Buffer M, 9 BT/CS EDTA Buffer, 15 ml/BT	TA-135-HBM	IVD
Large Vol Phosphate Buffered Saline (25X) 125 mL	TA-125-PB	IVD
Large Vol Phosphate Buffered Saline and Tween 20 (20X) 125 mL	TA-125-PT	IVD
Large Vol Tris Buffer Saline and Tween 20 (20X) 125 mL	TA-125-TT	IVD
Large Vol Tris Buffered Saline (25X) 125 mL	TA-125-TB	IVD
Mayer's Hematoxylin 125 mL	TA-125-MH	IVD
Mayer's Hematoxylin 60 mL	TA-060-MH	IVD

IHC Ancillaries		
Item	REF Num	
Pepsin Solution for Enzyme-Induced Epitope Retrieval 5 mL	AP-9007-005	IVD
PermaFluor Aqueous Mounting Medium 30 mL	TA-030-FM	IVD
PermaFluor Aqueous Mounting Medium 6 mL	TA-006-FM	IVD
Phosphate Buffered Saline (10X) 10 mL	AP-9009-10	IVD
Phosphate Buffered Saline and Tween 20 Large Vol (20X)	TA-999-PT	IVD
Protease XXV for Enzyme-Induced Epitope Retrieval 2mL	AP-9006-002	IVD
Protease XXV for Enzyme-Induced Epitope Retrieval 5mL	AP-9006-005	IVD
SI Prep, Aqua-Mount 125 mL	TA-125-AM	IVD
Tris Buffer Saline and Tween 20 Large Vol (20X) 999 mL	TA-999-TT	IVD
Tris-HCl Buffer for HIER (10X) 125 mL	AP-9005-125	IVD
Tris-HCl Buffer for HIER (10X) 500 mL	AP-9005-500	IVD
Tris-HCl Buffer for HIER (10X) 50 mL	AP-9005-050	IVD
Tween 20 (Polyoxyethelenesorbitan Monolaurate) 125 mL	TA-125-TW	RUO
UltraVision DAB Away 250 mL	TA-250-DA	IVD
UltraVision Protein Blk 125 ml	TA-125-PBQ	IVD
UltraVision Protein Block 1 L	TA-999-PBQ	IVD
UltraVision Protein Block 60 ml	TA-060-PBQ	IVD
UV Hydrogen Peroxide Block 1 L	TA-999-H2O2Q	IVD
UV Hydrogen Peroxide Block 125 ml	TA-125-H2O2Q	IVD
UV Hydrogen Peroxide Block 60 ml	TA-060-H2O2Q	IVD

Richard-Allan Scientific
Subsidiary of Thermo Fisher Scientific
4481 Campus Drive
Kalamazoo, MI 49008
UNITED STATES
+1 (800) 522-7270

Thermo Shandon Limited
Subsidiary of Thermo Fisher Scientific
Tudor Road, Manor Park
Runcorn, WA7 1TA
UNITED KINGDOM
Tel: +44 (0) 800 018 9396
Fax: +44 (0) 1928 534 000

Find your solution at [thermofisher.com/pathology](https://www.thermofisher.com/pathology)

ThermoFisher
S C I E N T I F I C